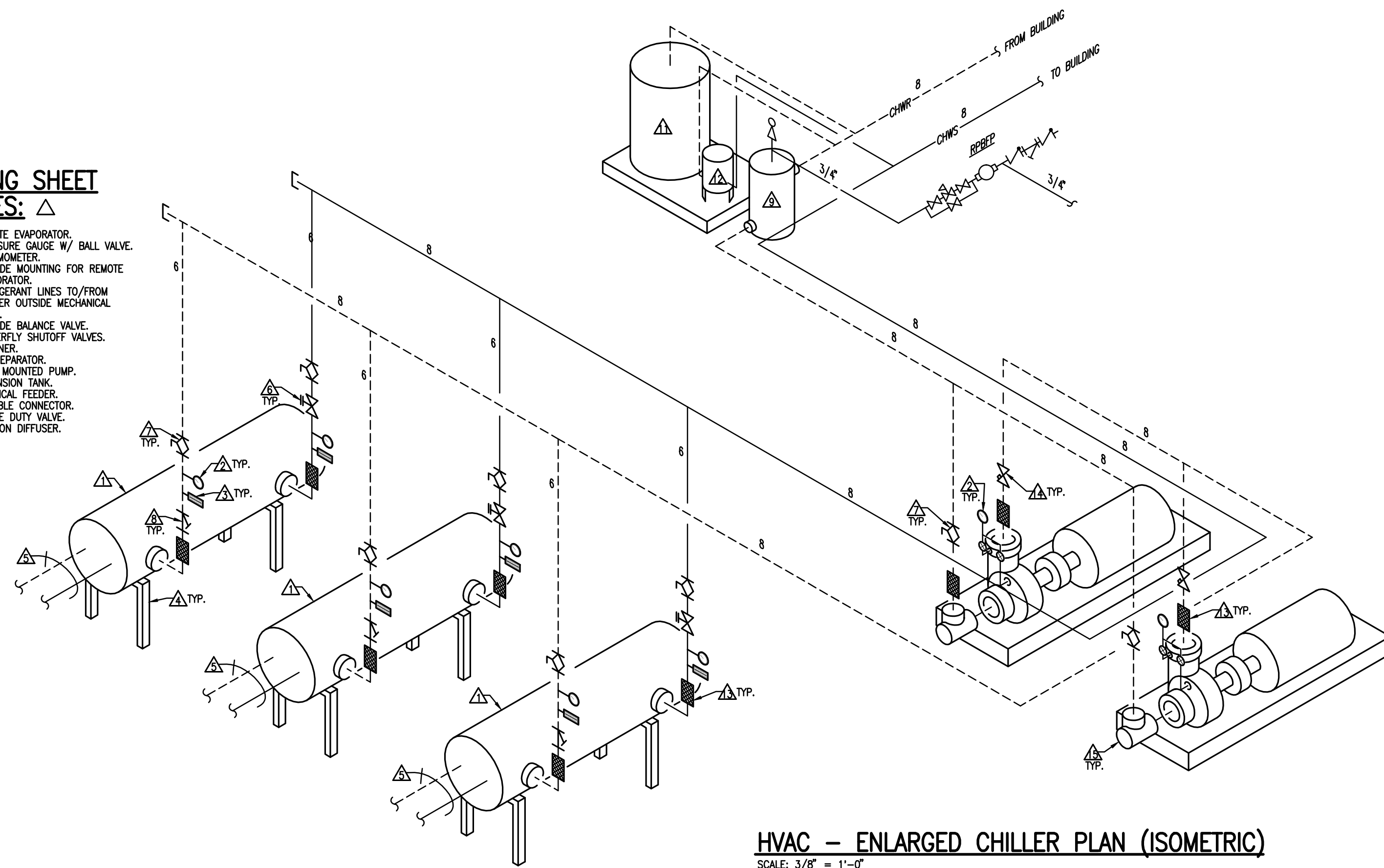


PIPING SHEET NOTES: △

1. REMOTE EVAPORATOR
2. PRESSURE GAUGE W/ BALL VALVE
3. THERMOMETER
4. PROVIDE MOUNTING FOR REMOTE EVAPORATOR
5. REFRIGERANT LINES TO/FROM CHILLER OUTSIDE MECHANICAL ROOM
6. PROVIDE BALANCE VALVE
7. BUTTERFLY SHUTOFF VALVES
8. STRAINER
9. AIR SEPARATOR
10. BASE MOUNTED PUMP
11. EXPANSION TANK
12. CHEMICAL FEEDER
13. FLEXIBLE CONNECTOR
14. TRIPLE DUTY VALVE
15. SUCTION DIFFUSER



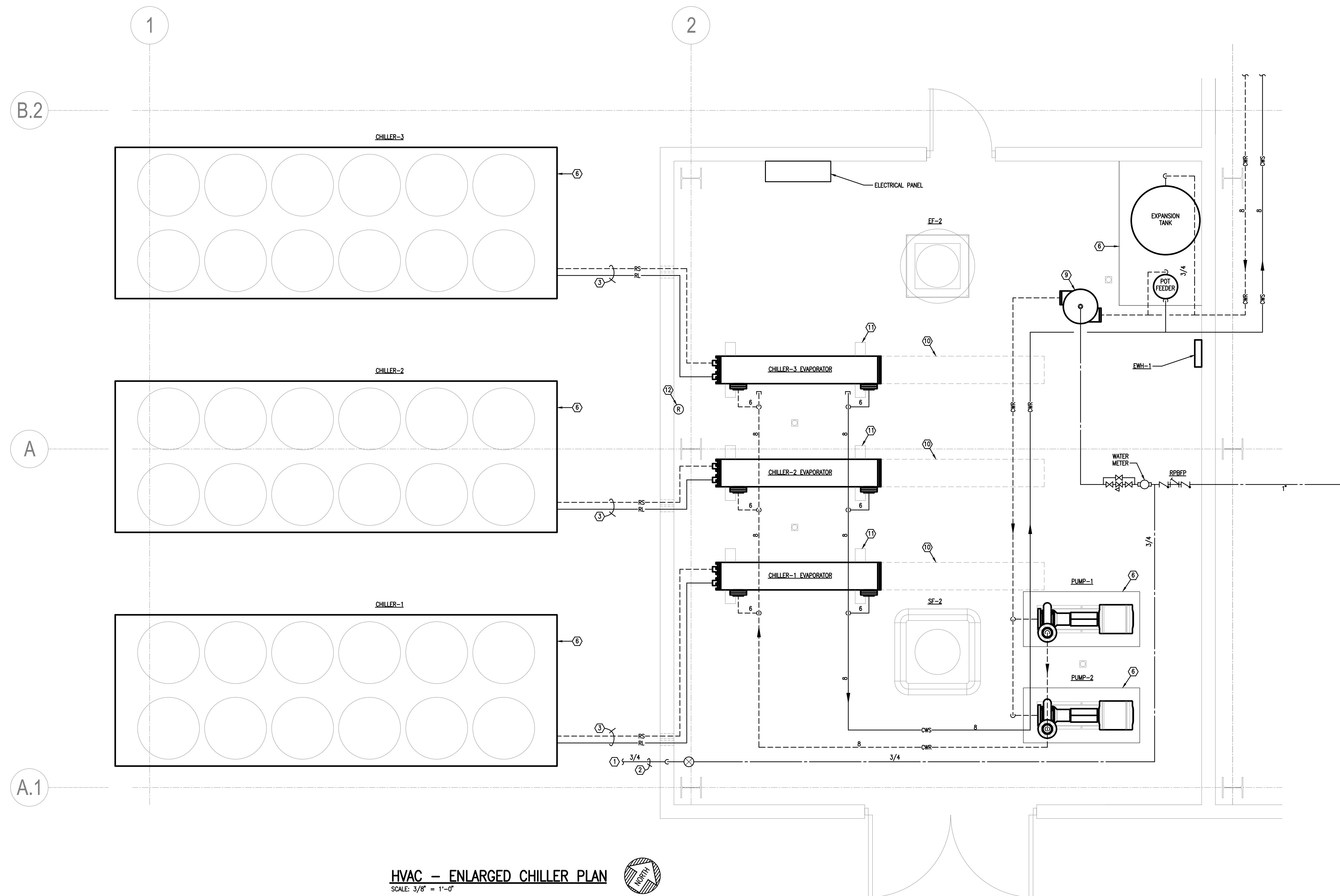
HVAC - ENLARGED CHILLER PLAN (ISOMETRIC)
SCALE: 3/8" = 1'-0"

GENERAL NOTES:

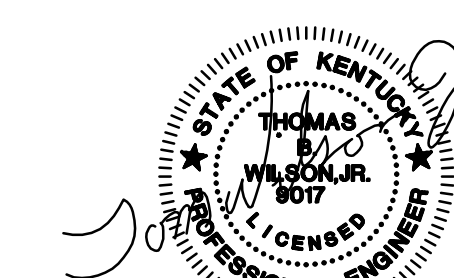
- THE FOLLOWING NOTES AND ANY OTHER GENERAL NOTES IN THE DRAWINGS ARE GENERAL IN NATURE AND PERTAIN TO THE ENTIRE PROJECT. WHERE THERE ARE EXCEPTIONS, ADDITIONS OR REVISIONS TO THESE NOTES, SUCH EXCEPTIONS, ADDITIONS OR REVISIONS ARE NOTED ON THE PARTICULAR DRAWING WHERE THEY OCCUR:
1. FOR CLARITY, THE PIPING SHOWN ON THE PLANS ARE DIAGRAMMATIC, AND MAY NOT SHOW ALL BENDS, OFFSET, ROUTING AND FITTINGS NECESSARY FOR THE INSTALLATION OF THE EQUIPMENT AS INTENDED.
 2. THE MECHANICAL CONTRACTOR SHALL COORDINATE WITH ALL OTHER TRADES IN THE INSTALLATION OF MECHANICAL EQUIPMENT AND ALL ASSOCIATED ACCESSORIES, PRIOR TO INSTALLING EQUIPMENT.
 3. PROVIDE MECHANICAL SLEEVES FOR ALL PENETRATIONS BELOW GRADE.
 4. CONCEAL ALL PIPING WHENEVER POSSIBLE UNLESS OTHERWISE NOTED.
 5. ALL PENETRATIONS IN MECHANICAL ROOMS, CORRIDORS AND STAIRWELLS NEED TO BE FIRE STOPPED AND ANY EXISTING HOLES IN WALLS, FLOORS AND CEILING OR HOLES CREATED BY REMOVAL OF EQUIPMENT, DUCT OR PIPING MUST BE PATCHED TO MATCH EXISTING FIRE RATING, FINISH & COLOR.
 6. THE CONTRACTOR IS TO VERIFY EXISTING CONDITIONS PRIOR TO BID AND START OF ANY WORK.
 7. ALL MECHANICAL INSTALLATION SHALL COMPLY WITH FEDERAL, STATE AND LOCAL CODES.
 8. ALL RECTANGULAR DUCTWORK (WITH EXCEPTION OF EXHAUST DUCT) SHALL BE LINED WITH 1" DUCT LINER. ALL ROUND OR OVAL DUCTS (WITH EXCEPTION OF EXHAUST DUCT) ARE TO BE WRAPPED WITH 1-1/2" WOVEN.
 9. HVAC SYSTEM TO BE BALANCED TO CFM NOTED ON PLANS.
 10. ALL ROOF TOP EQUIPMENT TO BE LOCATED A MINIMUM OF 10' FROM EDGE OF ROOF.
 11. INSULATED FLEXIBLE DUCT MAY BE USED TO MAKE CONNECTIONS TO DIFFUSER COLLAR EXTENSION. MAXIMUM LENGTH OF FLEX DUCT IS 5'-0".

SHEET NOTES: ○

1. DOMESTIC WATER TO YARD HYDRANT BY TRAIN PLATFORM (SEE SITE UTILITIES PLAN FOR CONTINUATION)
2. PIPE BELOW GRADE.
3. PROVIDE REFRIGERANT PIPING AND PIPING ACCESSORIES FROM CHILLERS OUTSIDE TO REMOTE EVAPORATORS LOCATED INDOORS. PIPE SIZES AND REQUIREMENTS SHALL BE PER THE CHILLER MANUFACTURER'S RECOMMENDED INSTRUCTIONS.
4. NOT USED
5. NOT USED
6. SEE STRUCTURAL DRAWINGS FOR EQUIPMENT PADS.
7. PROVIDE A 4" THICK CONCRETE HOUSEKEEPING PAD FOR DUPLEX STRAINER, EXPANSION & POT FEEDER. PAD SHALL BE 7'x4'.
8. PROVIDE A 4" FLANGED, CARBON STEEL IN-LINE FLUIDTROL BASKET STRAINER MODEL # CS1-7-6-1-060-3-1.
9. PROVIDE FULL LINE SIZE TANGENTIAL AIR SEPARATOR. SUPPORT AIR SEPARATOR INDEPENDENTLY OF PIPING.
10. MAINTAIN CLEARANCE FOR PULLING COILS FROM EVAPORATORS.
11. PROVIDE BACK STYLE SUPPORT FOR REMOTE EVAPORATORS PER ACCEPTED MANUFACTURER'S RECOMMENDATIONS.
12. PROVIDE REFRIGERANT LEAK DETECTOR NEAR CHILLER EVAPORATORS. INTERLOCK SIGNAL FROM REFRIGERANT DETECTOR TO SUPPLY AND EXHAUST FAN IN ROOM. IF LEAK IS DETECTED FANS SHALL START AUTOMATICALLY.



HVAC - ENLARGED CHILLER PLAN
SCALE: 3/8" = 1'-0"



DATE	REVISION	BY
NOV 11	VALUE ENGINEERING RE-DESIGN DOCUMENT	

This document contains confidential information and is the property of M&E of Kentucky, Inc. and is not to be distributed or used for any other purpose without the written permission of M&E of Kentucky, Inc. The user of this document warrants any and all responsibility and liability for problems which arise from failure to follow these plans, specifications and the design intent of this company.

PROJECT NO. 8529-02	DESIGNED BY TBW	DESIGNED BY RCD
CHECKED BY JLM	REVIEWED BY	DATE JULY 2011
SCALE 1/8" AS NOTED		

M&E OF KENTUCKY, INC.
Engineers
Architects
Planners
624 Wellington Way
Lexington, KY 40503
Phone: (859)223-5684
Fax: (859)223-2807
www.mseinc.com